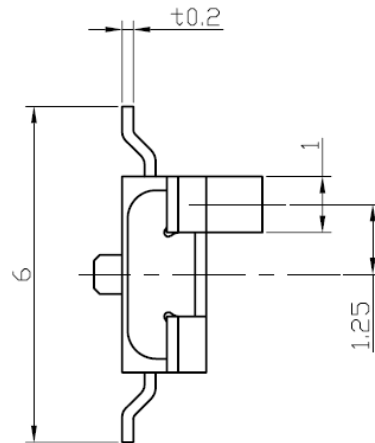
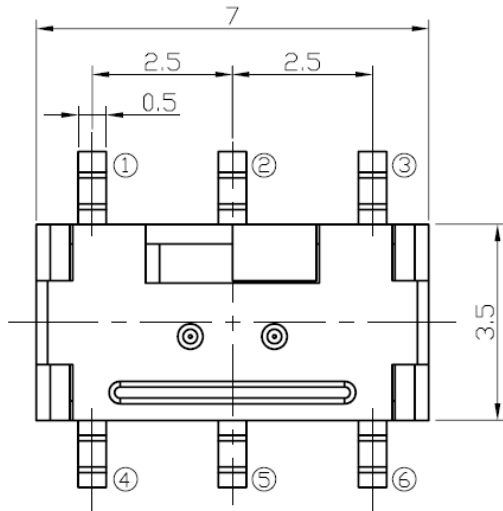
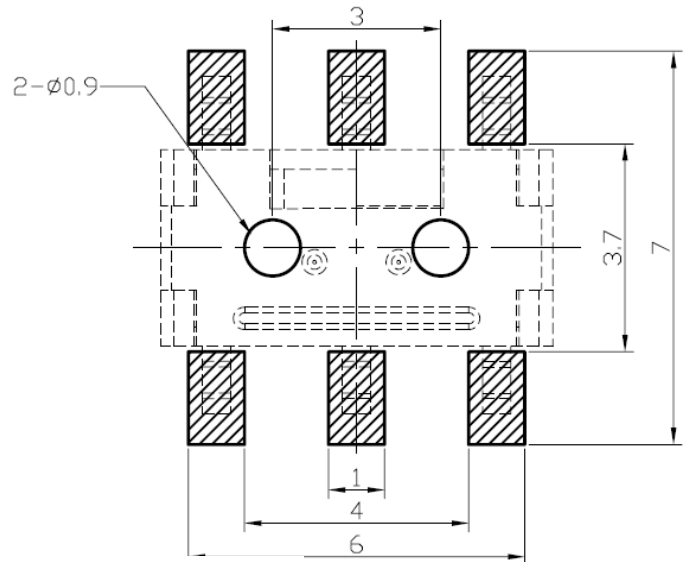
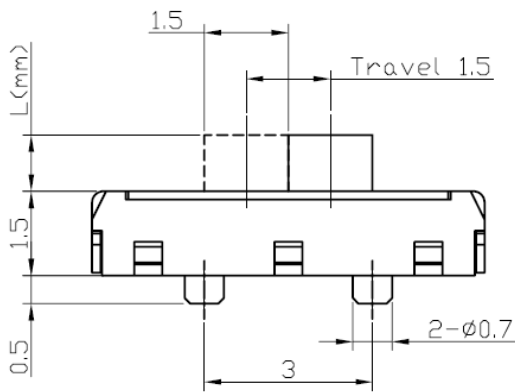


# DIMENSIONS

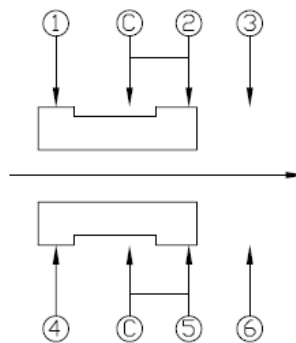


## P.C.B MOUNTING PATTERN DIMENSION

The following soldering patterns are recommended for reflow soldering



## CIRCUIT DIAGRAM



## SPECIFICATION

1. RATING : 0.3mA 4V DC
2. CONTACT RESISTANCE: 70mΩ Max.
3. TRAVEL : 1.5 ±0.3mm
4. OPERATING FORCE : 200±100gf
5. OPERATING LIFE:10,000

F4	3.0
F3	1.5
F2	2.0
-	1.0
L	mm



銓基電子股份有限公司  
ROKI ELECTRONICS CO., LTD.

PART NAME : SLIDE SWITCH

SCALE :

PART NO : SM22001-□□-S-PF SERIES

UNIT : mm

TOLERANCE : ±0.2 mm



VER : R02